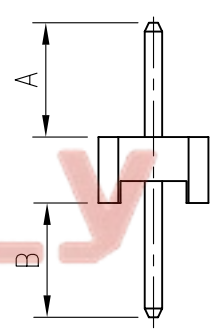
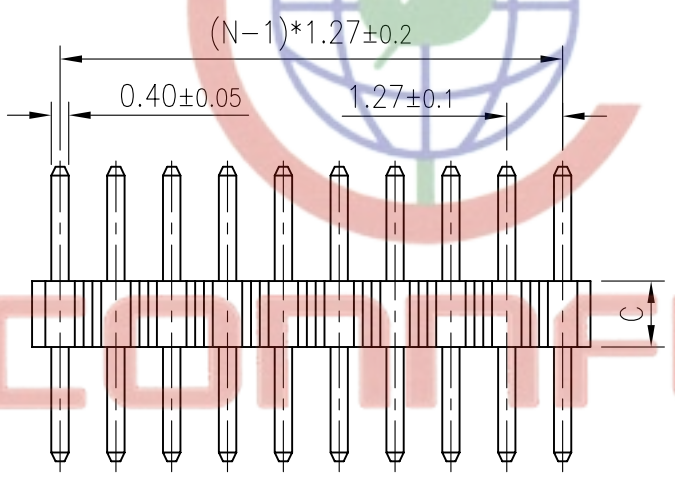
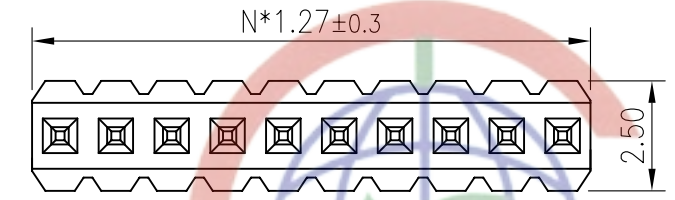


REV.	DESCRIPTION	DRAWN	CHECKED	APPROVED
A	NEW RELEASE	YCH 08/11/07'	~	



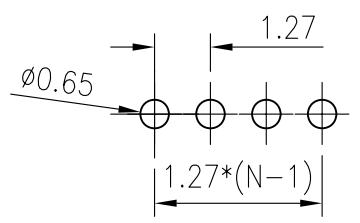
- NOTES:
- MATERIAL
 - INSULATOR:THERMOPLASTIC(UL 94V-0).
 - CONTACT MATERIAL:COPPER ALLOY.
 - SPECIFICATION
 - CURRENT RATING:1.0 Amp.
 - INSULATION RESISTANCE:500MΩ Min.
 - DIELECTRIC WITHSTANDING:300VAC.
 - CONTACT RESISTANCE:20mΩ Max.
 - OPERATING TEMPERATURE:-40°C TO+105°C.
 - PRODUCT NUMBER CODE:

DS1031-01 - X X X X X X X X

DIM.A B TYPE
 1: TYPE 1
 HOUSING HEIGHT(DIM. C)
 1: 1.00mm
 2: 1.50mm
 3: 2.00mm
 MOUNTING TYPE
 V: VERTICAL TYPE
 HOUSING COLOR
 B:BLACK
 CONTACT PLATING
 8: FULL GOLD FLASH
 CONNECTOR TYPE
 P:PLUG
 No.OF CONTACTS
 1*1-1*40

N:NUMBER OF CONTACTS

18		10	
19		11	
20		12	
21		13	
22		14	
23		15	
24		16	
25		17	



RECOMMEND PCB LAYOUT(TOLERANCE=±0.05)

GENERAL TOLERANCE		ANGLE TOLERANCE		PROJECTION		TITLE	
X.	±0.60	X.	±5°	mm		1.27mm PITCH PIN HEADER SINGLE ROW STRAIGHT	
.X	±0.38	.X	±3'	A4		SERIES DS1031-01 SERIES	
.XX	±0.25	.XX	±2'				
DRAWING TYPE		CUSTOMER		晨翔电子有限公司 CONNFLY CONNFLY ELECTRONIC CO. LTD			
SCALE		SHEET					
DRAWING NO.		C-DS1031-01-XXXXXXX					